

guide to the fabric choice

The choice of a filter cloth starts with the selection of the most suitable fibre according to working temperature and environment. The most common yarns are polypropylene, polyamide, polyester, PTFE and those fibres available on the market.

staple

Staple yarns have a low tensile strength but a large surface, which is excellent for the retention of the smallest particles. The cake release is less effective because of the greater filtration capacity. It is very resistant to wear.



multifilament

Multifilament yarn has a high tensile strength and a good retention capacity. The cake release is average.



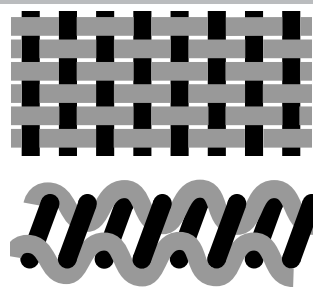
monofilament

The main feature of monofilament yarn is that it is particularly smooth. It allows an excellent cake release and a low risk of cloth blinding. The retention capacity of particles is low.



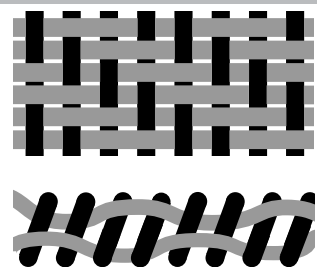
plain

This is the most simple structure. Both sides of the fabric have the same appearance. High retention capacity and low resistance to blinding, with good cake release properties.



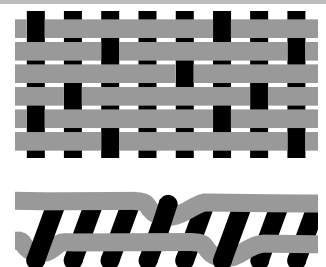
twill

This fabric pattern has a diagonal structure with the two sides not always identical. Very good mechanical resistance, good resistance to blinding and reasonably effective cake release.



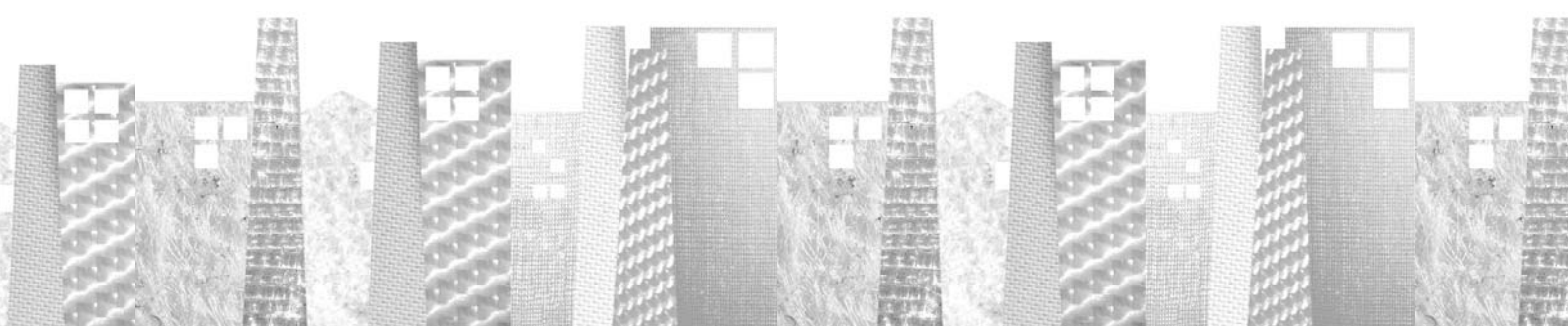
satin

The satin pattern gives the fabric a smooth and bright appearance. The two sides of the fabric are always different. Excellent cake release, medium retention capacity, very good resistance to blinding.

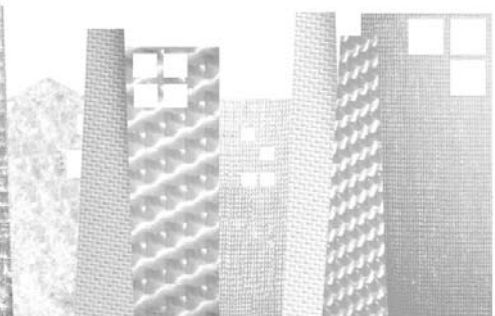


filter media features

	weave patterns			staple	yarn types	
	plain	twill	satin		multifilament	monofilament
filtration rate	●	●●	●●●	●	●●	●●●
retention capacity	●●●	●●	●	●●●	●●	●
resistance to blinding	●	●●	●●●	●	●●	●●●
cake release	●	●●	●●●	●	●●	●●●



TESTORI SpA - 20026 Novate Milanese (Mi - Italy) - Largo A. Testori n. 5 - Tel. +39 02.35231 - Fax: +39 02.3523230
www.testori.it - e-mail: info@testori.it



f a b r i c s - l i q u i d f i l t r a t i o n

a complete range of products

_cloths for filterpresses _cloths for belt filterpresses _cloths for disc filters _cloths for drum filters _belts for vacuum filters _filtering bags _bands and bags for centrifugal machines _fluid bed dryer bags _honeycomb fabrics _belts for bakeries, pasta and the biscuit industry.



integrated production line

warping: our modern equipment permits the use of every kind of yarn, keeping high and constant the quality of our finished products.

weaving: high performance looms, controlled by a computer integrated system, are suitable for large scale or specific customer demands, always with a high quality-price ratio.

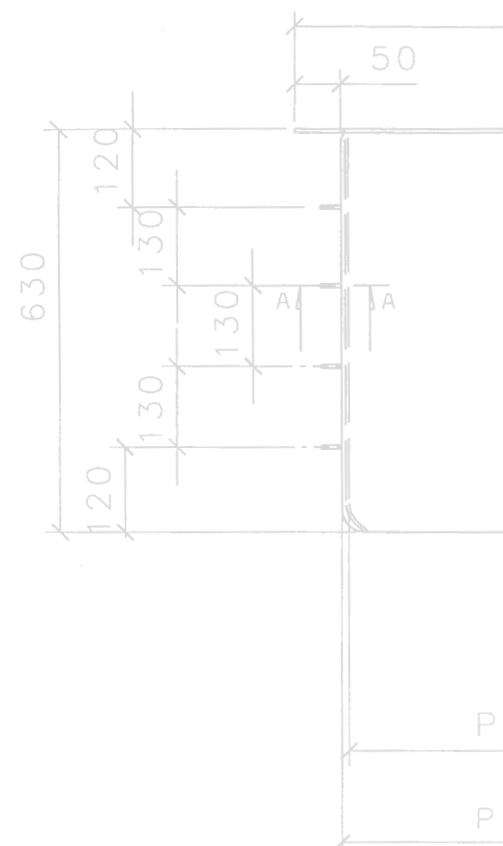
finishing: _heat-setting: it's a thermal treatment that gives dimensional stability to the fabric by exposing it to the highest possible temperature for the fibre.



_calendering: it's a treatment that combines heat and pressure to achieve the required permeability and gives a particularly smooth surface to the cake side of the fabric.

laser cutting: the precision of our ready made products is assured by the use of laser cutting devices that allow speed, precision, compliance to the original drawing and continuity throughout production.

assembling and sewing: the competence and the experience of the staff in our stitching shop, in addition to the use of the latest equipment, assures the excellence of our production.

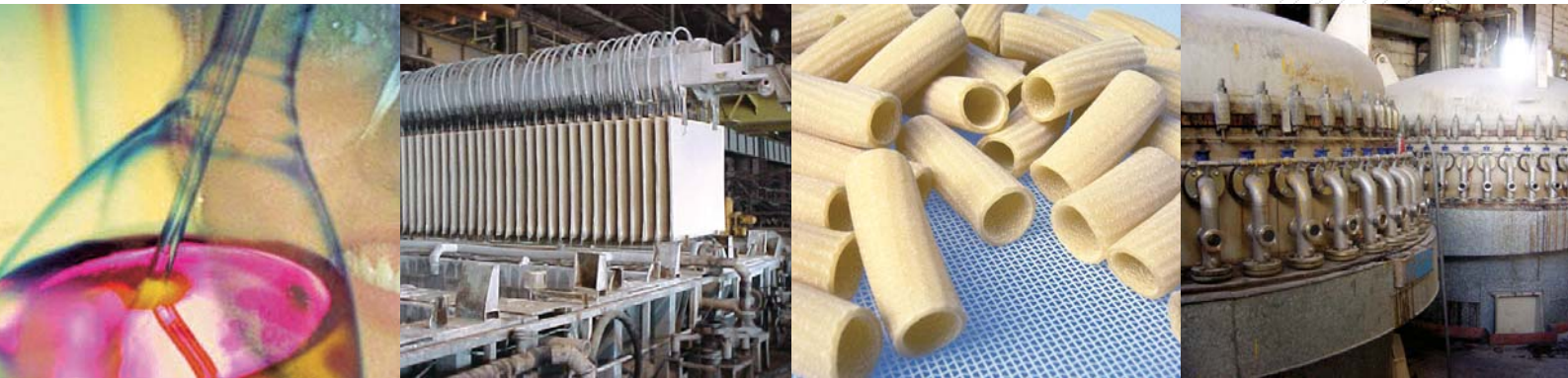
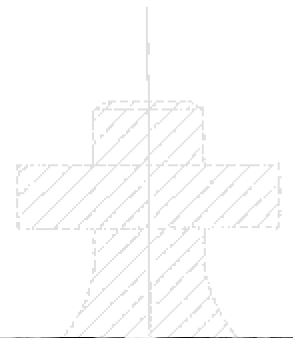


chemical and pharmaceutical

Our products are used in chemical and pharmaceutical industries, both in production processes and in the separation and dehydration of waste sludge.

The main application areas in the pharmaceutical industries include production of antibiotics, vaccines, plasma and synthetic production of medicines.

Within the chemical applications, our filter media can be found in the production of organic and inorganic pigments, colouring substances, iron oxide, titanium dioxide, chemistry of plastics, detergents, sulphur, sodium chlorite and phosphorous.



Our filter media can separate particles from 0,5 micron up to 500 microns in extremely difficult working conditions, with temperatures up to 200° C.

food industry

The use of Testori products in the food industry has proved to be particularly successful in many fields:

- _in the cheese industry, during production and depuration
- _in the wine industry, juice filtration and lees dehydration
- _in the beer industry, juice filtration and lees including brewer's yeast dehydration
- _in the filtration of distillation bottoms and production of food acids (tartaric acid)
- _polishing of alcoholic solutions
- _in the sugar industry for purification of sugar juices
- _in the oil industry, purification of animal and vegetable oils, with specially designed products such as those used for palm oil
- _dehydration of breeding and slaughtering washing sludge.

Technical textiles are used as conveyor belts for the baking, biscuit and pasta industries.



metallurgical industry

In the metallurgy industries our products are widely used in steel factories and foundries for the de-watering of sludge coming from fumes treatment.

Our products are equally effective in the electrolytic production process of non ferrous metals; Zn, Pb, Cr, Cu, Cd. Indium, Aluminium, Gallium, Arsenic. Precious metals recovery Au, Ag.



glassworks and ceramic industry

Testori fabrics can be employed in the ceramic industry both in the production and refining process of the clay and in the treatment of wastewater generated during the various working processes. Our filterpress cloths can combine an optimum retention with an efficient cake release.

Specific applications may enclose kaolin and slip casting production, ceramics and porcelain clay, painting and glazing cycles in tile production. Ceramic industry, kaolin, china clay, porcelain clay, feldspars and siliceous sands. The treatment and neutralisation of production water is essential to the glass industry.

Our textiles assure mechanical resistance to abrasion and long life, thanks to the choice of the best yarns and special attention to weaving and production of the manufactured articles.

